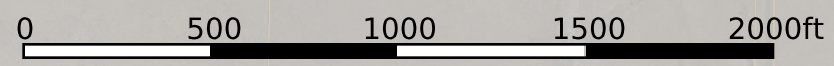
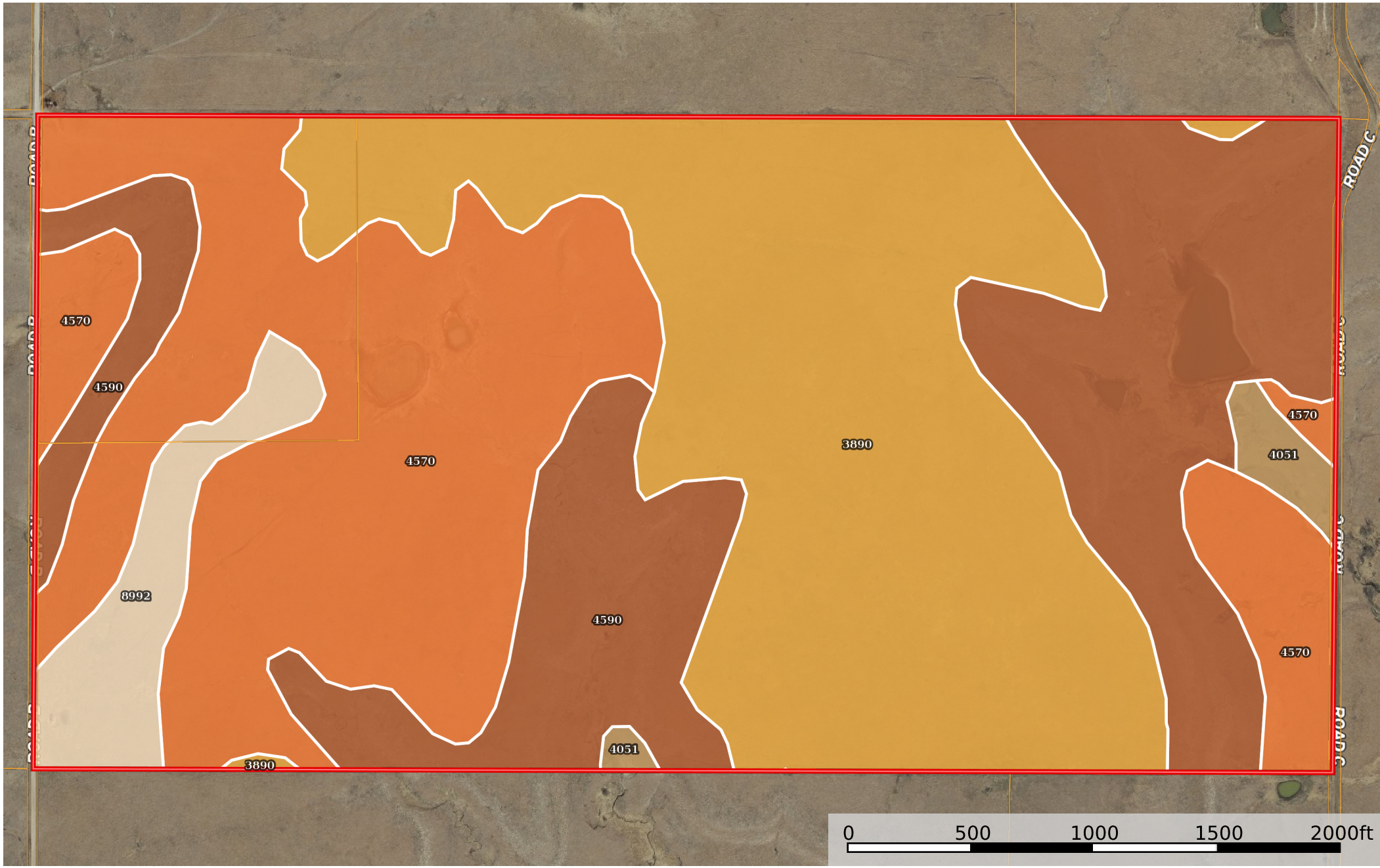


Merry Family Resources Tract 5

Lyon County, Kansas, 320 AC +/-



 Boundary

|  Boundary 320.81 ac

SOIL CODE	SOIL DESCRIPTION	ACRES	%	NCCPI	CAP
3890	Ladysmith silty clay loam, 0 to 1 percent slopes	112.91	35.2	53	2s
4570	Clime silty clay, 3 to 7 percent slopes	103.34	32.21	41	3e
4590	Clime-Sogn complex, 3 to 20 percent slopes	86.69	27.02	32	6e
8992	Zaar silty clay, 3 to 8 percent slopes	13.86	4.32	46	4e
4051	Ivan silt loam, channeled	4.01	1.25	51	5w
TOTALS		320.81(*)	100%	43.13	3.53









(*) Total acres may differ in the second decimal compared to the sum of each acreage soil. This is due to a round error because we only show the acres of each soil with two decimal.

Capability Legend

Increased Limitations and Hazards

Decreased Adaptability and Freedom of Choice Users

Land, Capability

								
	1	2	3	4	5	6	7	8
'Wild Life'	•	•	•	•	•	•	•	•
Forestry	•	•	•	•	•	•	•	
Limited	•	•	•	•	•	•	•	
Moderate	•	•	•	•	•	•		
Intense	•	•	•	•	•			
Limited	•	•	•	•				
Moderate	•	•	•					
Intense	•	•						
Very Intense	•							

Grazing Cultivation

(c) climatic limitations (e) susceptibility to erosion

(s) soil limitations within the rooting zone (w) excess of water